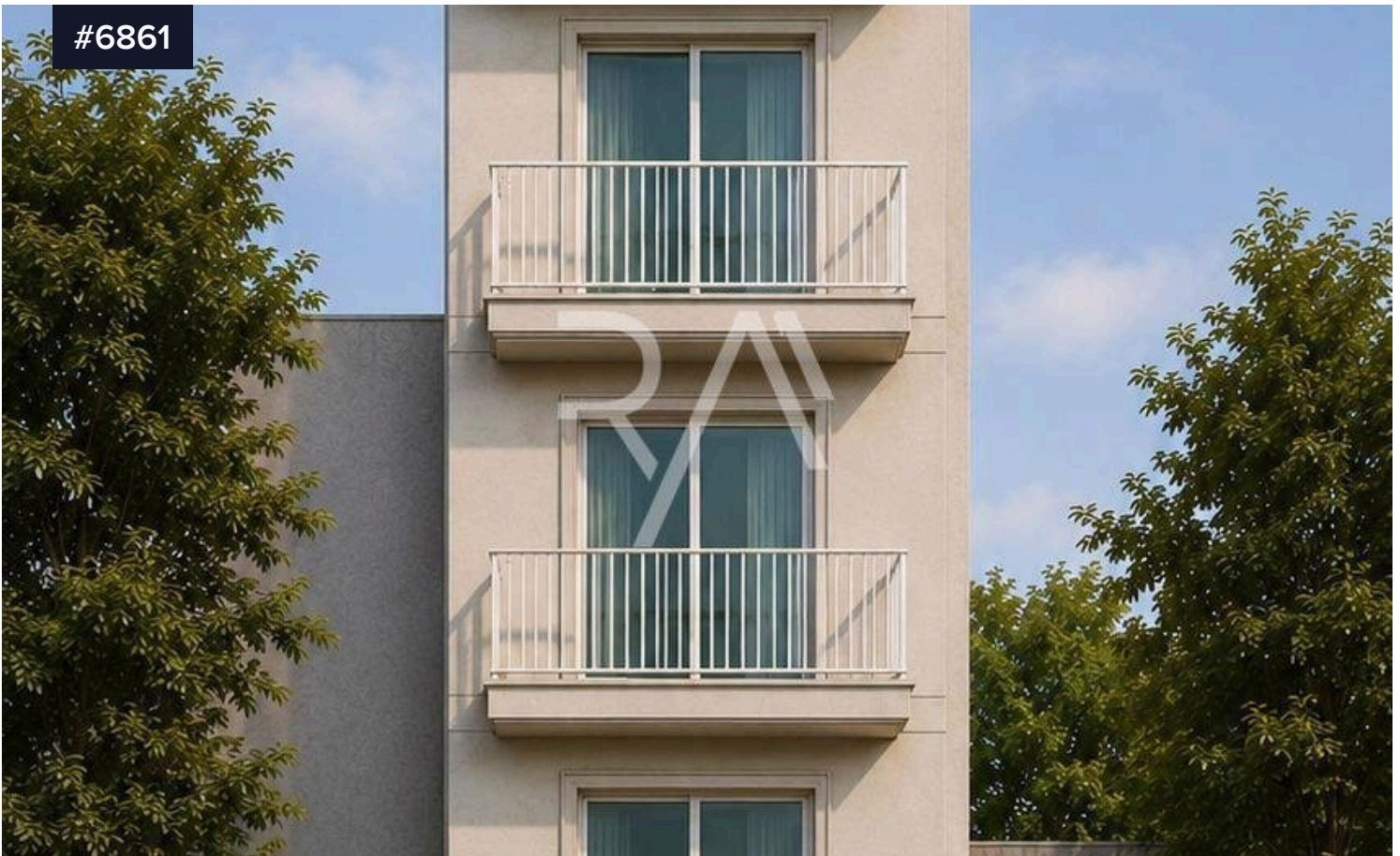


#6861



## Penthouses in Gzira | Sliema and St Julians Surroundings

€640,000

 Gzira, Sliema and St Julians Surroundings

Bedrooms

 4

Bathrooms

 4

Covered

 131 m<sup>2</sup>

Type

Apartment

A modern PENTHOUSE designed for contemporary living in one of Malta's most sought-after locations. Layout consists of 180sqm PENTHOUSE, spacious open plan with surrounding terrace, 4 bedrooms and 4 bathrooms (3 ensembles and main bathroom), walkin wardrobe and laundry room. Finished excluding bathrooms and doors. Walking distance to all amenities and seafront.