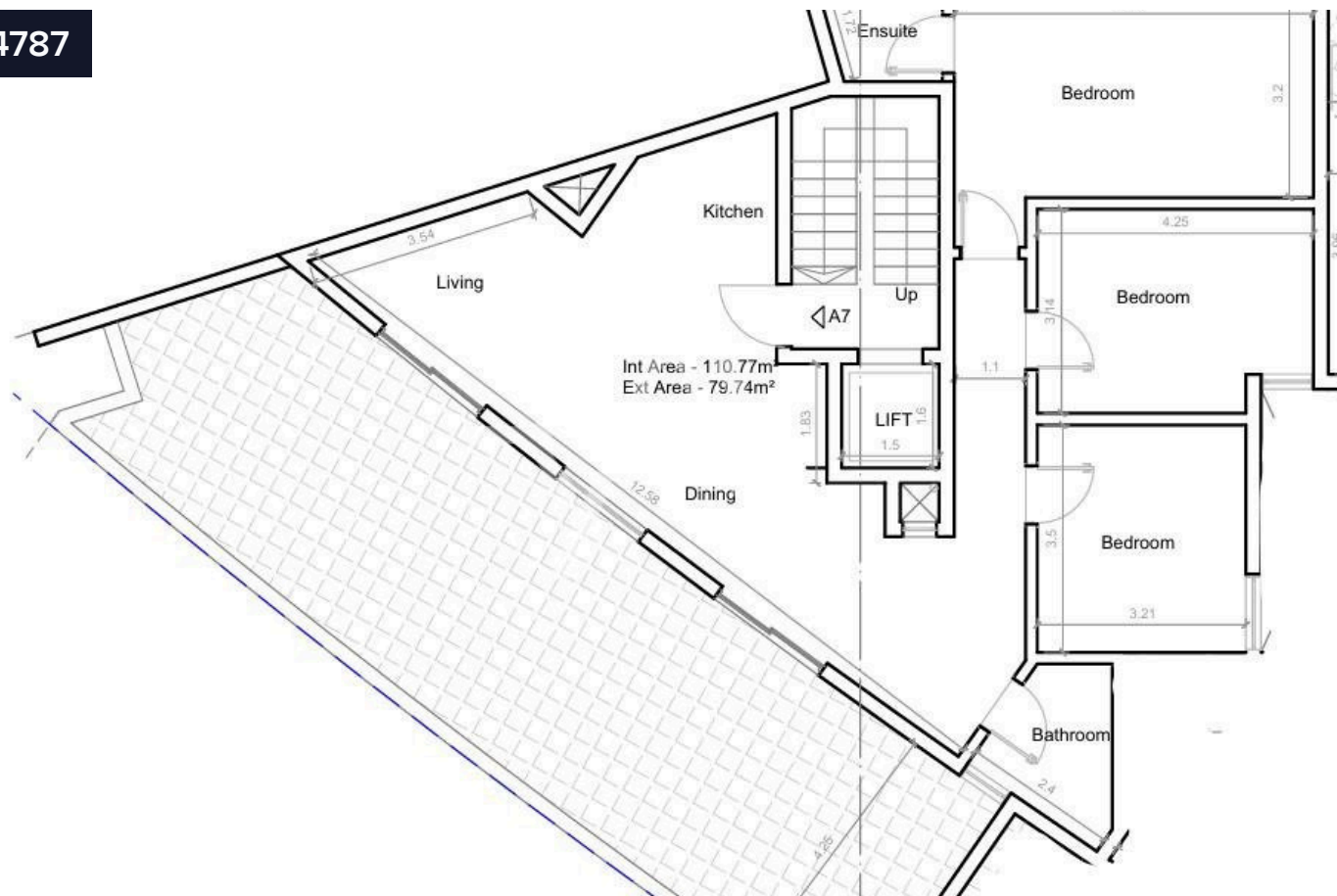


#4787



Penthouses in Swieqi | Sliema and St Julians €513,500 Surroundings

📍 Swieqi, Sliema and St Julians Surroundings

Bedrooms

 3

Bathrooms

 2

Covered

 110 m²

Type

Apartment

Plot

80 m²

Year of construction

2026

SWIEQI - Penthouse with layout comprising an open plan kitchen, living, dining leading to a spacious front terrace, master bedroom with an ensuite, two spare bedroom, box room and a main bathroom. The property will be sold finished including bathrooms & doors. Optional interconnected garages available.